

# MAKUTSI SAFARI SPRINGS



## Cheetah in Camp

With no fence around Makutsi Camp it means the animals can roam freely throughout camp. One afternoon we had a 3-hour visit from a female Cheetah who sat at the edge of camp keeping a close eye on the no walking sign, making sure all our guests respect the camp boundary.



**April 2013**

## Latest updates

- Page 1 Lodge updates
- Page 2 Cheetah Research update
- Page 3 Safari Sightings

## Festive Season in the bush

Festive Season at Makutsi is one of our favorite times of year, especially regarding the food & surprises.

Christmas time we celebrate dinner in the lapa with stunning views over the river & Drakensberg Mountains. One Christmas tradition followed by the family is home made German cookies! They are so good... that there is never enough.

This New Year we started the celebrations at Tented Camp (the rain clouds were hanging around, so no dinner in the bush!) with some bush cocktails, mini night safari, followed by some entertainment back at main camp.

The Easter bunny also found his way to the Lowveld. With a big plate of chocolate eggs & home made Chelsea Buns - who could be happier.





## Cheetah research update

Since October 2012 we have had a lot happen with our Cheetah research project in the North. We successfully relocated the 2 cubs to the Northern Cape and we sadly found Arusha, our female Cheetah, killed by a Leopard.

Arusha did extremely well for over 7 years on Makutsi North, and successfully raised 3 litters during this time, which shows what a good Cheetah mother she was. We have thousands of images and memories to remember her by, and she will always be our Queen. At the moment the Cheetah Research Drive is on hold until we introduce some new Cheetahs.

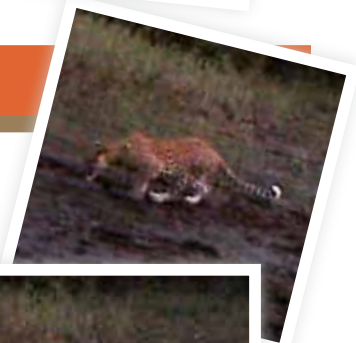
We are working closely with EWT (Endangered Wildlife Trust) who are currently busy finding us a female & male Cheetah to introduce on Makutsi North. One main role of EWT is to ensure that the Cheetahs on private reserves in South Africa come from different bloodlines. This means making sure we do not have a male & female that are related. The main purpose of this is to strengthen the bloodline of Cheetah in South Africa, to improve their genetics.



## Camera trap - Leopard sightings

Our Anti-poaching team has been active patrolling the reserve day & night. During their patrols they have been seeing regular fresh tracks of Leopards on the North.

The team set up camera traps throughout the bush with the intent of capturing poachers, however it is the Leopards that keep taking the stage! We have been slowly identifying them and have come to realize there are 4-6 Leopards residing on Makutsi North at any given time



## Safari Sightings



### Flap-Neck Chameleon Crèche

The Chameleon is always an interesting sighting on safari; with their ability to change colour & their unique eyes which allows them to see almost 360deg (just not right behind them) & they can look in 2 different directions at the same time!

Seeing one Chameleon is special; to see a Chameleon crèche with up to 30 little ones is quite a rare sighting. It has been known that the Chameleon can lay up to 60 eggs, for which she digs a hole & buries them!

The eggs will normally hatch 9 months after mating season.

Some of our guests who were on a Simba Safari (5 hour game drive) spotted this crèche with the spot light! Not an easy sighting to find, but well done to the guide!



### Dwarf Mongoose & the Termite mound

Another one of our favorite sightings are the Dwarf Mongoose. Once you stop the Land Rover long enough and they become relaxed, it is great to sit and watch them keeping busy.

The Dwarf mongoose are the smallest carnivores found in the lowveld, feeding on insects, reptiles & small mammals.

A termite mound is often used as a safe house for the Dwarf mongoose, with its underground tunnels and ventilation system, it provides an ideal home.

Groups defend territories of 1km<sup>2</sup> to 2km<sup>2</sup> and these territories are passed down through the generations.

They are highly social, living in groups between 12 to 30. The group is dominated by one alpha pair that is responsible for the breeding of the group. If a subordinate female gives birth, the alpha female will kill the young!



### NEW fitness equipment

Over the last 6 months we have invested in the Fitness room. Our fitness room is equipped with 2 bicycles, a rowing machine, hand held weights, bench press, home gym with several different functions.

## The Makutsi Team

[www.makutsi.com](http://www.makutsi.com)  
[www.facebook.com/makutsi](http://www.facebook.com/makutsi)